

# DEFENSE



## IN DEPTH

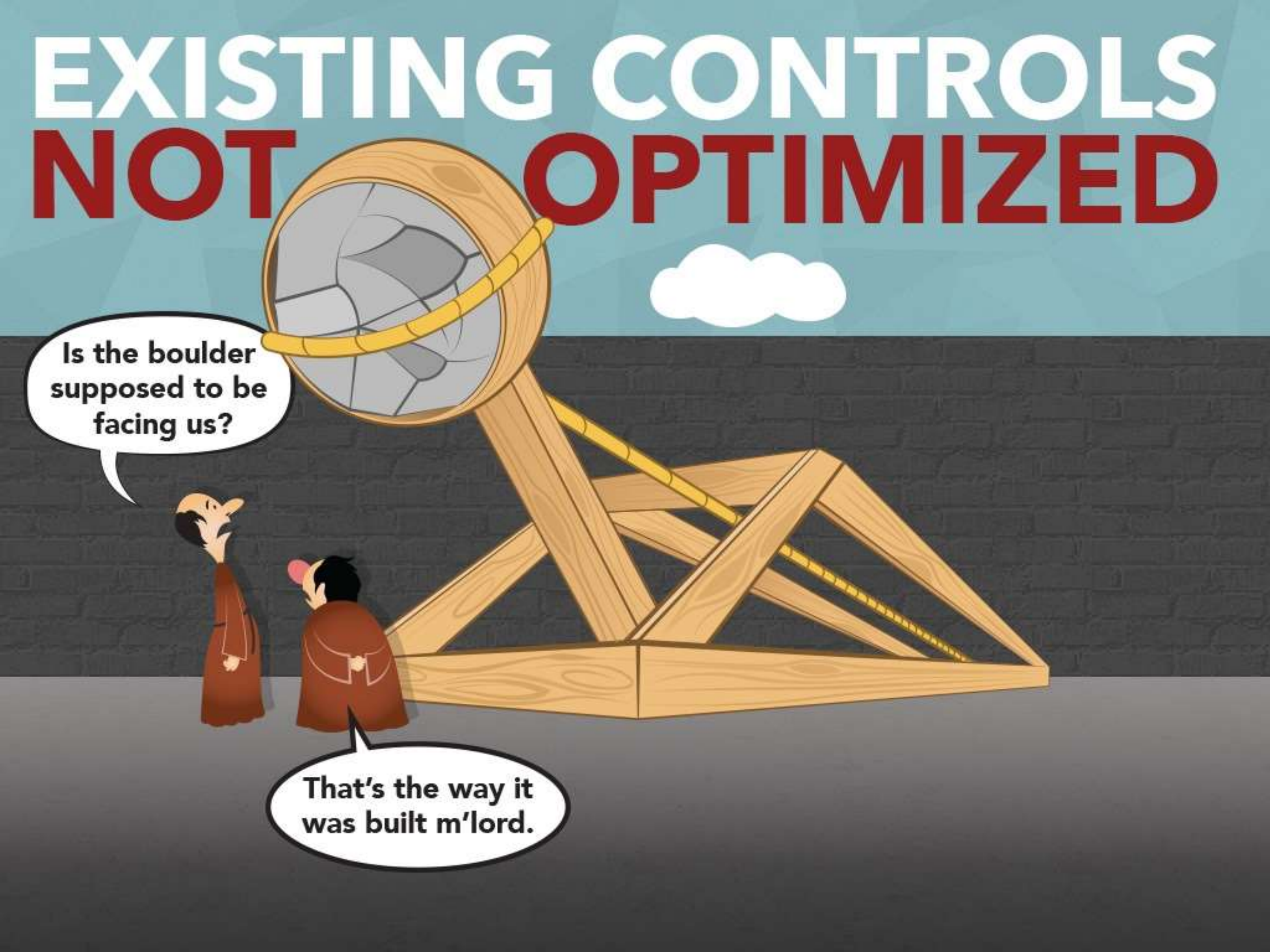
YOUR SECURITY CASTLE

**BREAKING IN**



**IS EASY**

# EXISTING CONTROLS NOT OPTIMIZED



Is the boulder supposed to be facing us?

That's the way it was built m'lord.

# SPENDING MORE ON SECURITY



# DOESN'T MEAN MORE SECURITY

*Introducing*

**DEFENSE**  
**inDEPTH**

*Moat*

*Tower*

*Tower*

# LAYERS OF PROTECTION

*Tower*

*Tower*


*Castle Tower*



# PRINCIPLE OF LEAST ACCESS



# FIREWALLS



Somebody musta left  
the pot on.



# OUTBOUND FILTERING



# INTRUSION DETECTION / PREVENTION



**GUARDS**

**ALARMS**

NOT EVERYONE IS A  
**THREAT**



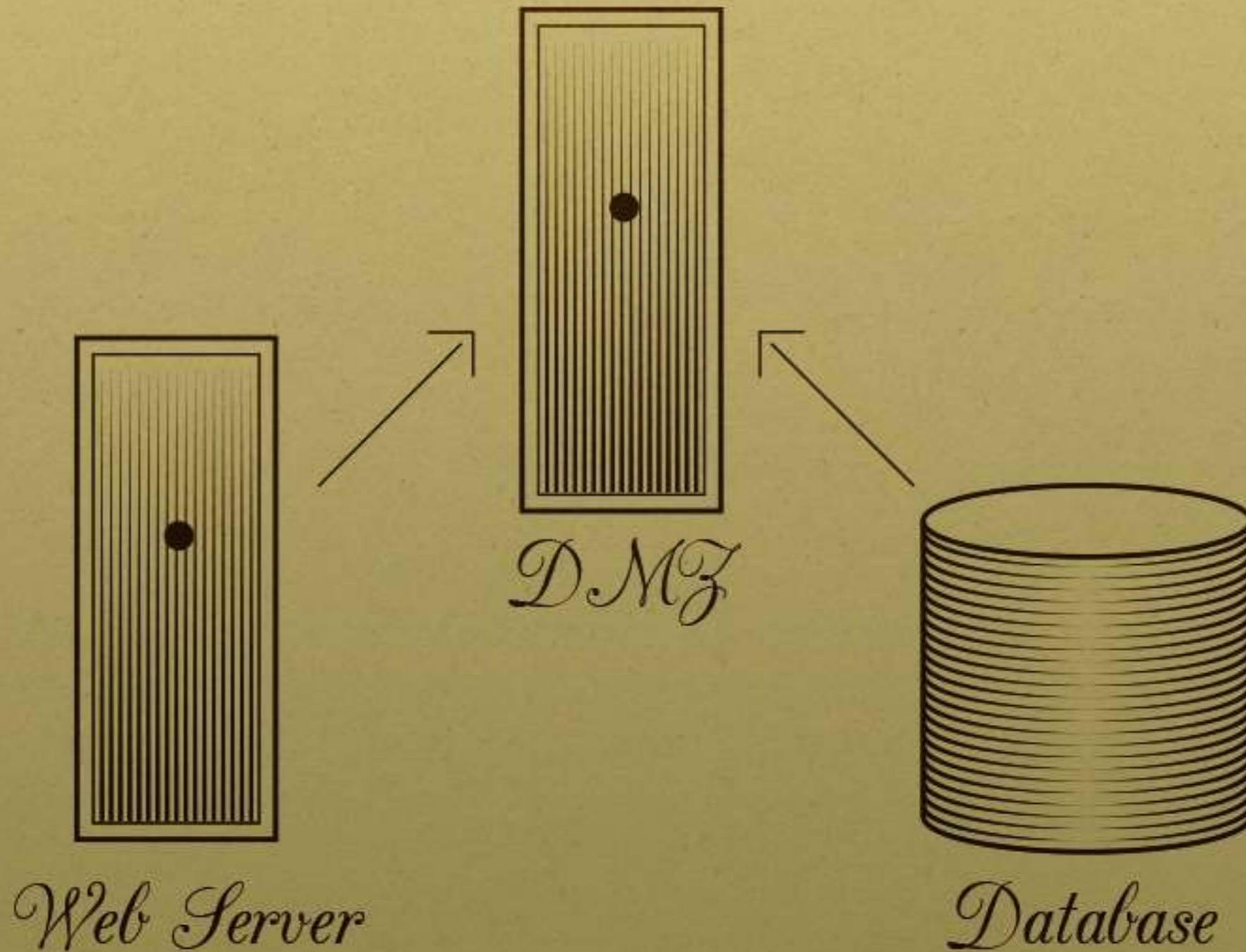
# NETWORK SEGMENTATION

Knights

Peasants



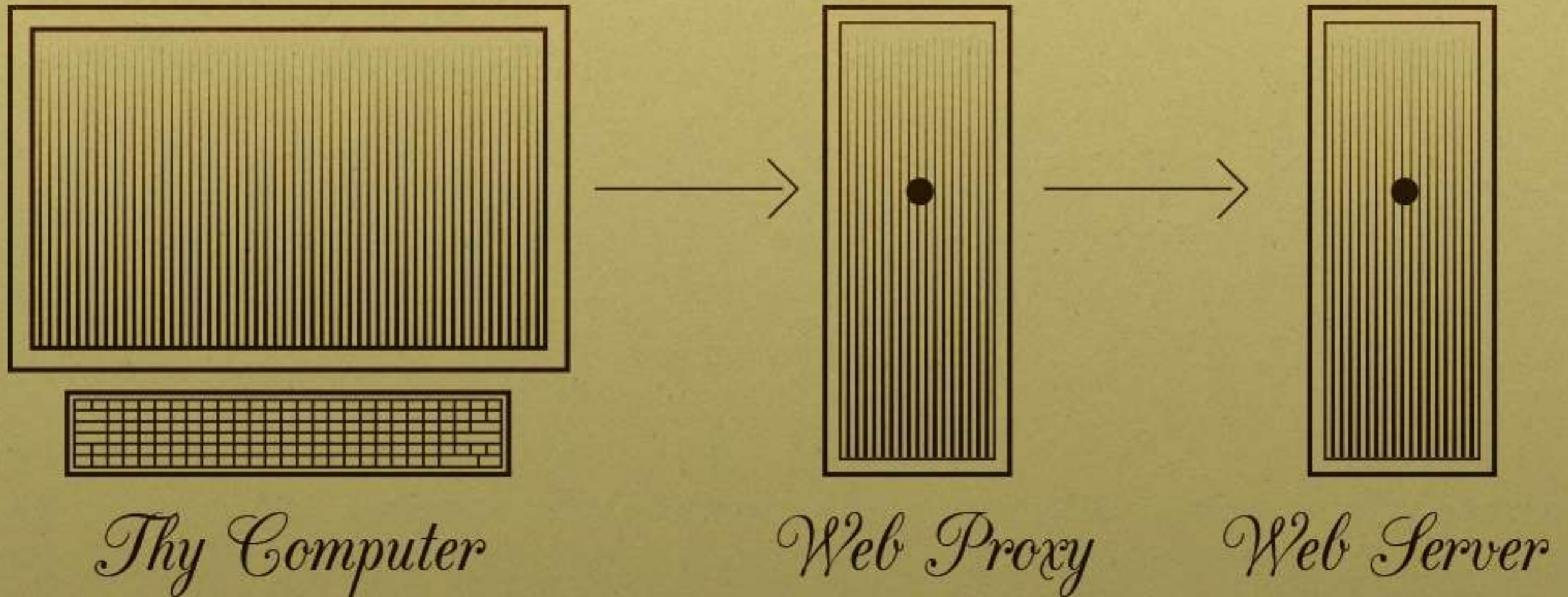
# NETWORK SEGMENTATION



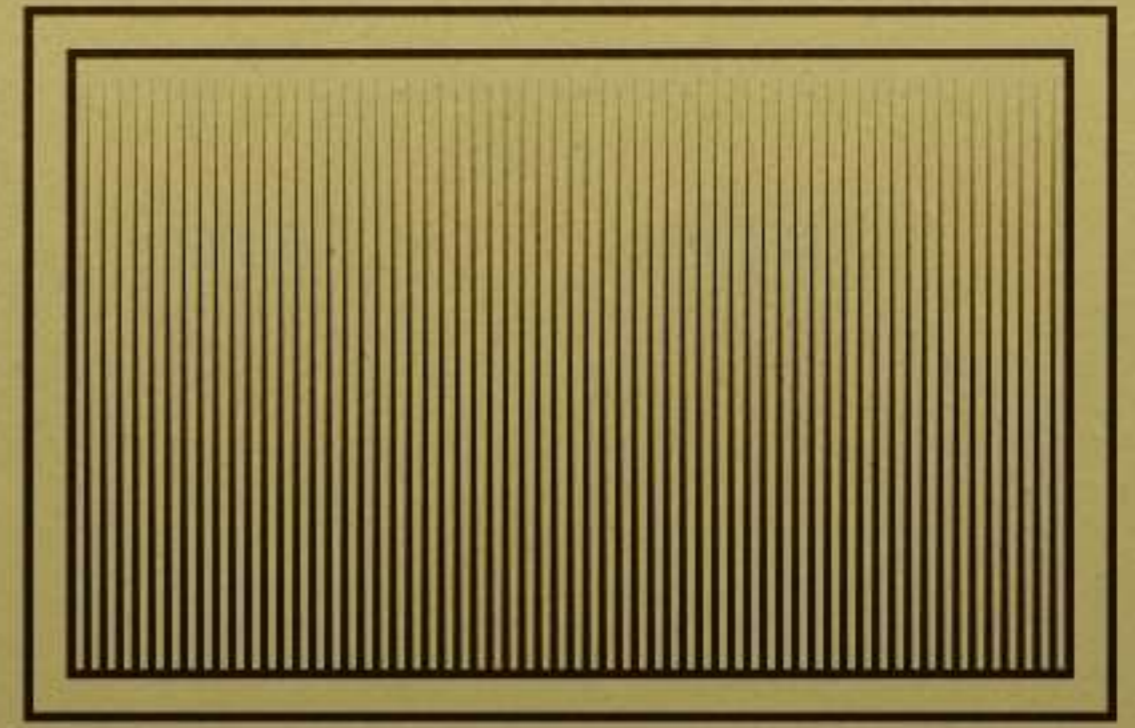
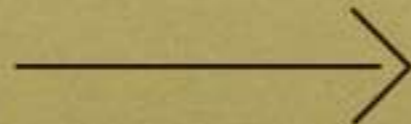
# FIX VULNERABILITIES



# WEB PROXY



# APPLICATION LAYER FIREWALL



*Application Firewall*

*Thy Application*



# POSITIVE ACCESS CONTROL

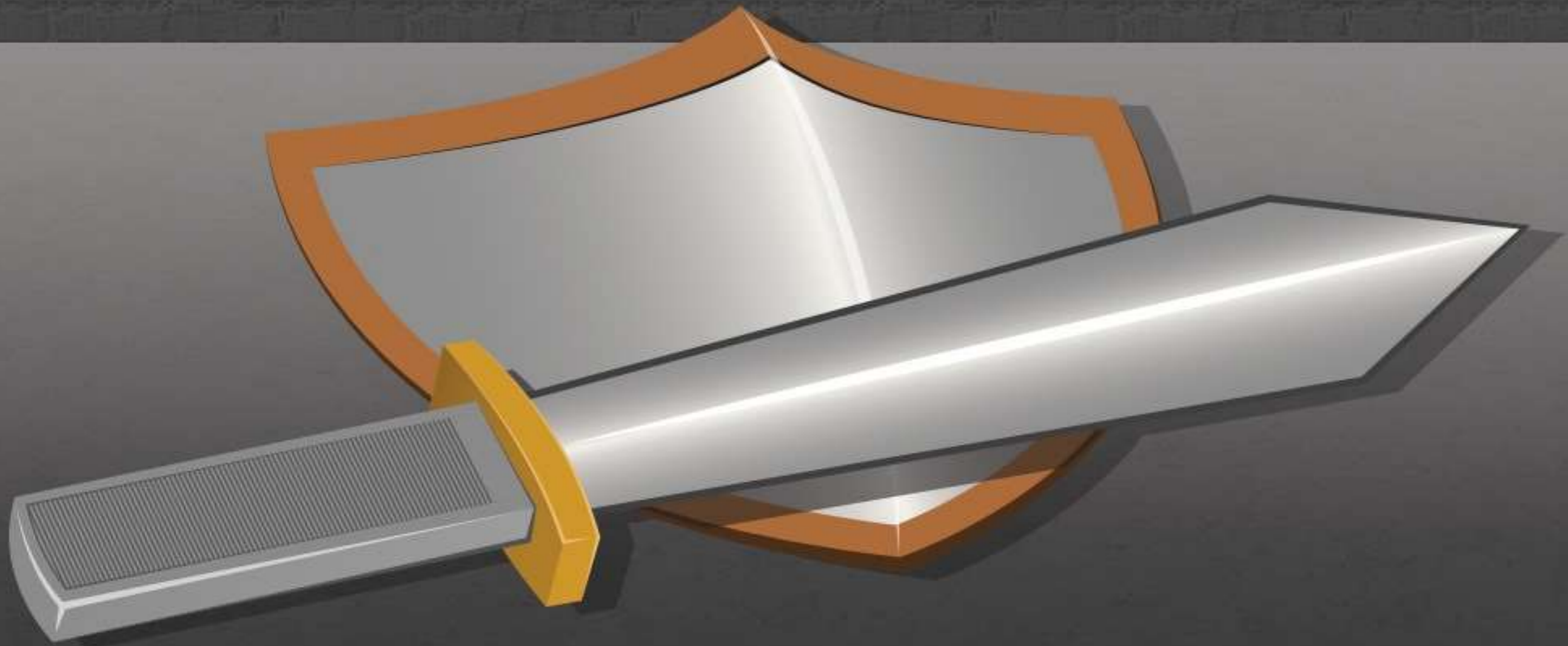


# RESTRICT USER ACCESS



HAHAHAHA!  
I'm King Now!

# CLIENT PROTECTION STILL IMPORTANT



BRINGING IT ALL

TOGETHER



# QUESTIONS?

